

# P15

**HARD STAIN REMOVER**

## CLEANING GUIDE

### Professional Solution for Removing Hard Mineral & Inorganic Stains

PULFRESH P15 is a powerful acidic cleaner specially formulated to remove stubborn hard water deposits, cement residue, grout haze, limescale, urine stains, and other inorganic contaminants from tiles and hard surfaces.



### KEY BENEFITS



Removes Cement  
and Grout Residue



Eliminates Hard Water  
Stains and Limescale



Removes Urine Stains  
and Mineral Deposits



Deep Descaling  
Action



Fast-Acting  
Formula



Restores Surface  
Cleanliness



PROFESSIONAL  
CLEANING



FAST  
RESULTS



DEEP  
DESCALING

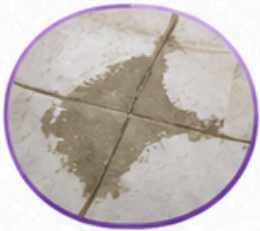
IDEAL FOR BATHROOMS,  
TOILETS, TILES & POST-  
CONSTRUCTION CLEANING

# PULFRESH<sup>®</sup> P15

**HARD STAIN REMOVER**

### WHAT STAINS CAN P15 REMOVE?

PULFRESH P15 is specially formulated to dissolve and remove tough inorganic and mineral-based deposits.



#### CEMENT RESIDUE

Removes post-construction cement marks, splashes, and grout haze from tiled surfaces.



#### HARD WATER STAINS

Breaks down mineral deposits caused by hard water.



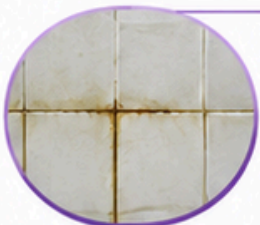
#### LIMESCALE DEPOSITS

Dissolves calcium and mineral buildup around tiles, wash basins, toilets, and shower areas.



#### URINE SCALE & URINE STAINS

Removes uric deposits and mineral buildup commonly found in toilets and urinals.



#### ACID STAINS & DEPOSITS

Helps restore surface appearance by removing inorganic staining and deposits.



#### MINERAL BUILDUP

Penetrates and removes stubborn deposits from hard surfaces.



**IDEAL FOR BATHROOMS, TOILETS, SHOWER AREAS, SINKS, AND POST-CONSTRUCTION CLEANING.**

# PULFRESH<sup>®</sup> P15

HARD STAIN REMOVER

## CLEANING GUIDE

PAGE 3 OF 8

## DILUTION & USAGE GUIDE

### HEAVY STAINS

For cement residue, heavy limescale, hard water deposits, urine scale and stubborn mineral buildup.

- 1 Use P15 undiluted.
- 2 Apply directly to the affected area.
- 3 Leave for **2-5 minutes**.
- 4 Scrub if necessary.
- 5 Rinse thoroughly with clean water.



**2-5**  
MINUTES  
CONTACT TIME

### MODERATE CLEANING

For regular maintenance and moderate stain removal.

#### DILUTION RATIO

**300-500 ml**  
P15 + **1 LITRE**  
WATER



- 1  Prepare the solution.
- 2  Apply evenly on the surface.
- 3  Allow sufficient contact time.
- 4  Scrub lightly if required.
- 5  Rinse thoroughly with clean water.



**ALWAYS PERFORM A PATCH TEST**  
before large-scale application.



**USE IN A WELL-VENTILATED AREA**  
WEAR PROTECTIVE GLOVES

### HARD STAIN REMOVER

## HOW TO REMOVE HARD STAINS FROM TILES



PULFRESH P15 is a powerful acidic cleaner that removes tough mineral deposits, stains and discoloration from tiles.

1



### REMOVE LOOSE DIRT

Sweep or wash the tiled surface to remove dust and loose debris.

2



### APPLY P15

Apply undiluted P15 directly onto hard stains and mineral deposits.

3



### CONTACT TIME

Allow the product to work for 2–5 minutes.

**Do not allow the solution to dry on the surface.**

4



### SCRUB

Use a nylon brush or scrubbing pad to loosen stubborn deposits.

5



### RINSE

Rinse thoroughly with plenty of clean water.

### RESULTS



CLEANER  
TILES



REMOVES HARD  
MINERAL DEPOSITS



IMPROVED  
APPEARANCE



RESTORED  
CLEANLINESS



### HARD STAIN REMOVER

## HOW TO REMOVE CEMENT & ACID STAINS

PULFRESH P15 is a powerful acidic cleaner that effectively removes cement residue, grout haze, acid marks and other inorganic deposits.

### CEMENT RESIDUE & GROUT HAZE REMOVAL

- 1 Apply **undiluted P15** directly onto cement marks.
- 2 Allow **2–5 minutes** contact time.
- 3 Scrub gently using a non-metallic brush or pad.
- 4 **Rinse thoroughly** with clean water.



### ACID STAINS & DEPOSIT REMOVAL

- 1 Apply **undiluted P15** to the affected area.
- 2 Allow **sufficient** reaction time (2–5 minutes).
- 3 **Scrub lightly** if necessary.
- 4 **Rinse thoroughly** with clean water.



**IMPORTANT**



Always test a small hidden area before treating large surfaces.



Do not allow the product to remain on the surface for extended periods.



Avoid prolonged exposure on grout joints and natural stone.



Ensure adequate ventilation during use.

# PULFRESH<sup>®</sup> P15

## CLEANING GUIDE

PAGE 6 OF 8

### HARD STAIN REMOVER

# HOW TO REMOVE LIMESCALE FROM TILES



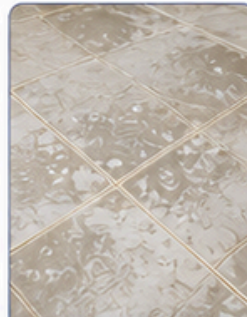
PULFRESH P15 dissolves limescale, calcium deposits and hard water buildup, restoring tiles to their original shine.

#### WHERE LIMESCALE FORMS

- ✓ Bathroom wall tiles
- ✓ Floor tiles
- ✓ Shower areas
- ✓ Around taps and fittings
- ✓ Wet areas exposed to hard water



SHOWER WALLS



FLOOR TILES



AROUND TAPS



WALL TILES

#### LIMESCALE REMOVAL PROCEDURE (HEAVY DEPOSITS)

##### 1 APPLY P15



Apply undiluted P15 directly to limescale deposits.

##### 2 CONTACT TIME



Allow 2-5 minutes contact time for the product to work.

##### 3 SCRUB



Scrub using a nylon brush or pad to remove scale and deposits.

##### 4 RINSE



Rinse thoroughly with clean water for a shiny, scale-free surface.

#### FOR MODERATE LIMESCALE



Use diluted solution:

**300-500 ml  
P15  
per 1 litre of water**

- ✓ Apply solution on affected area.
- ✓ Allow contact time.
- ✓ Scrub lightly if needed.
- ✓ Rinse thoroughly with clean water.

BEFORE



AFTER



#### BENEFITS



Removes calcium deposits



Eliminates hard water buildup



Restores tile appearance



Deep descaling action



Fast acting formula

**HARD STAIN REMOVER**

## SURFACE COMPATIBILITY

PULFRESH P15 is effective on many hard surfaces.  
Always check surface compatibility before full application.

### RECOMMENDED SURFACES



**CERAMIC  
TILES**



**ACID-RESISTANT  
SURFACES**



**TOILET BOWLS**



**URINALS**



**WASH BASINS  
& SINKS**



**BATHROOM FLOORS  
& WALLS**



### USE WITH CAUTION



**NATURAL STONE**  
May react with acidic  
cleaners.



**GROUT JOINTS**  
Avoid prolonged  
exposure as it may  
cause damage.

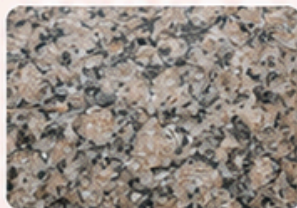
### DO NOT USE ON



**MARBLE**



**POLISHED  
GRANITE**



**ALUMINUM**



**CHROME  
FITTINGS**



### BEST PRACTICE

Always perform a patch test on a small,  
hidden area before full application to  
verify compatibility and ensure best results.



**RIGHT PRODUCT • RIGHT SURFACE • BEST RESULTS**

# PULFRESH<sup>®</sup> P15

**HARD STAIN REMOVER**

## CLEANING GUIDE

PAGE 8 OF 8

## SAFETY, STORAGE & FIRST AID

### SAFETY PRECAUTIONS



Wear protective gloves during use.



Avoid contact with eyes and skin.



Use only in well-ventilated areas.



Keep out of reach of children and pets.



Do not ingest.



Do not mix with bleach or other cleaning chemicals.



Avoid splashing during application.

### FIRST AID



#### EYE CONTACT

Rinse immediately with plenty of clean water for at least 15 minutes. Seek medical advice if irritation persists.



#### SKIN CONTACT

Remove contaminated clothing and wash skin thoroughly with soap and water.



#### INGESTION

Do not induce vomiting. Rinse mouth with water. Seek immediate medical attention.



**IN CASE OF DOUBT,  
SEEK MEDICAL ATTENTION  
IMMEDIATELY.**

### STORAGE INSTRUCTIONS



Store in a cool, dry place.



Keep away from direct sunlight.



Keep container tightly closed when not in use.



Store in the original corrosion-resistant container only.



Keep away from incompatible materials.

### IMPORTANT INFORMATION

PULFRESH P15 is a powerful acidic cleaner designed for professional use.

Read the label and this cleaning guide carefully before use.

**FOR PROFESSIONAL  
CLEANING USE ONLY.**



**SAFE HANDLING • PROPER STORAGE • CORRECT USAGE  
FOR BEST RESULTS AND MAXIMUM SAFETY**